



Stability and Durability

Helmsman

SPECIES: Pacific Chestnut™
WIDTHS: 5"
CUT: Sawn Cut
TEXTURE: Weathered and Wirebrushed
INSTALLATION GUIDELINES PAGE 177

THICKNESS: 1/2", 2 mm veneer
LENGTHS: 2' - 4'
FINISH: Premium UV-Cured Urethane Finish, satin matte
TYPE: Engineered



PREFINISHED FLOORING GALLERY



Skysail



Halyard



Spinneraker



Meridian

Helmsman
ENGINEERED



Harbor



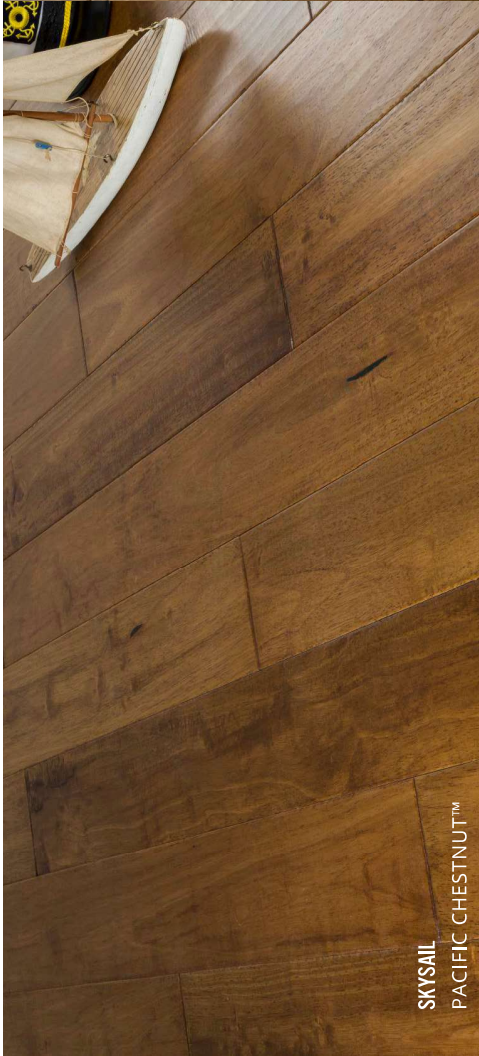
Boatswain



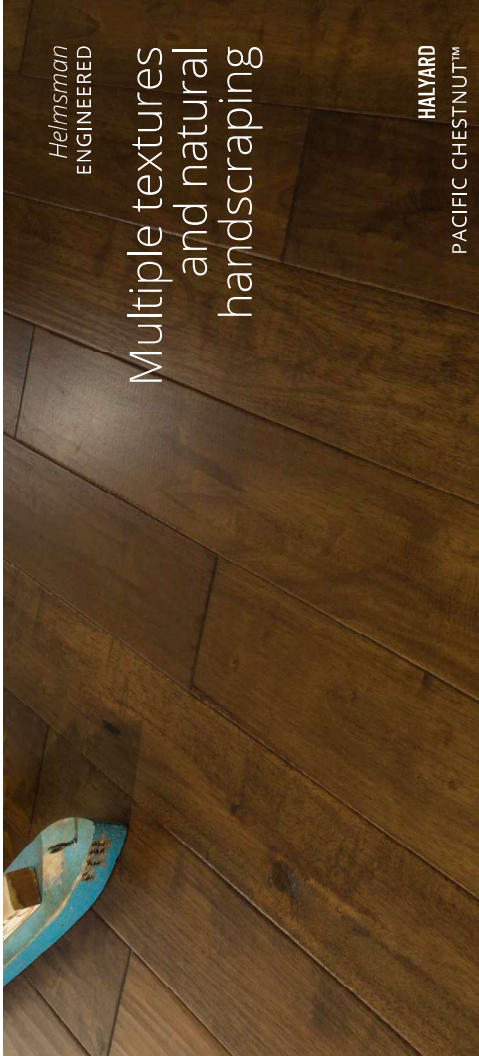
Topmast



Moonraker



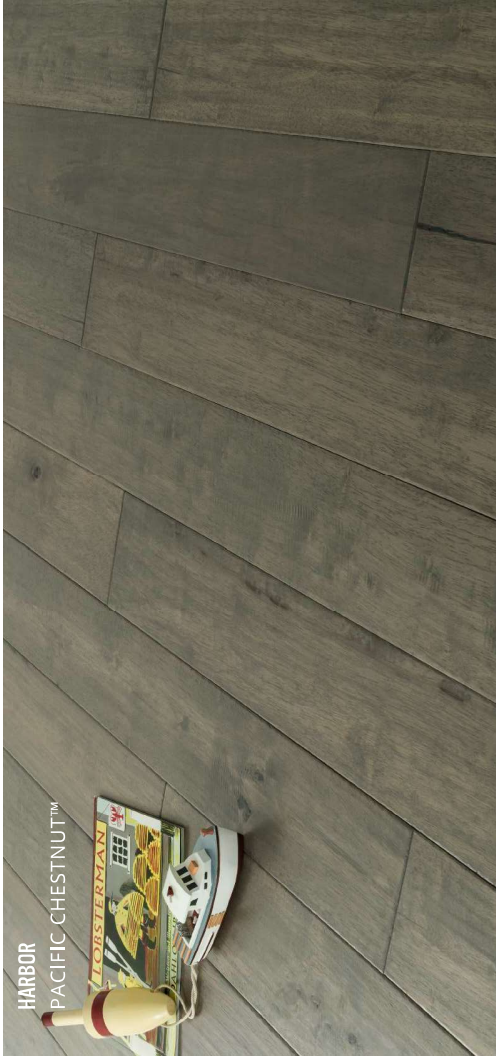
SKYSAIL
PACIFIC CHESTNUT™



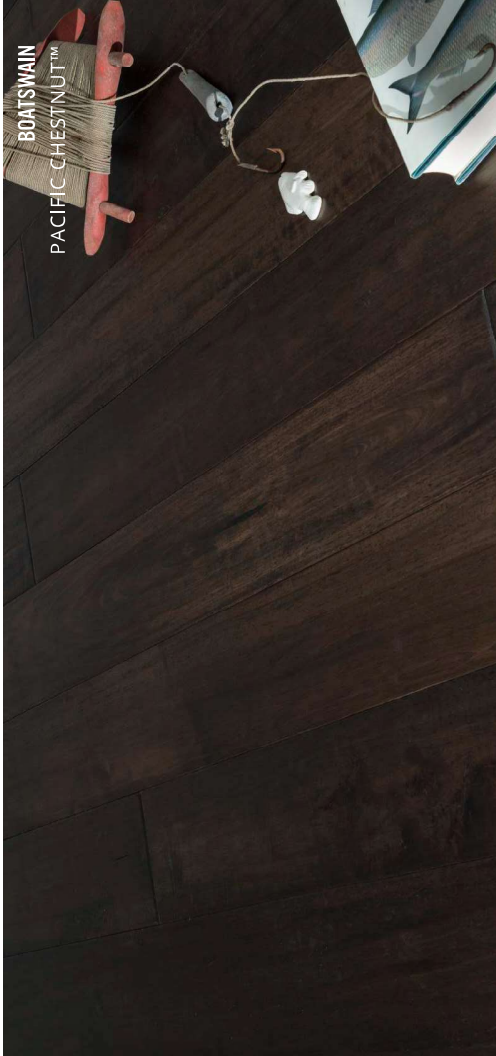
Helmsman
ENGINEERED

Multiple textures
and natural
handscrapping

HALYARD
PACIFIC CHESTNUT™



HARBOR
PACIFIC CHESTNUT™



BOATSWAIN
PACIFIC CHESTNUT™

Exotic look
and unique
grain pattern

SPINNAKER
PACIFIC CHESTNUT™



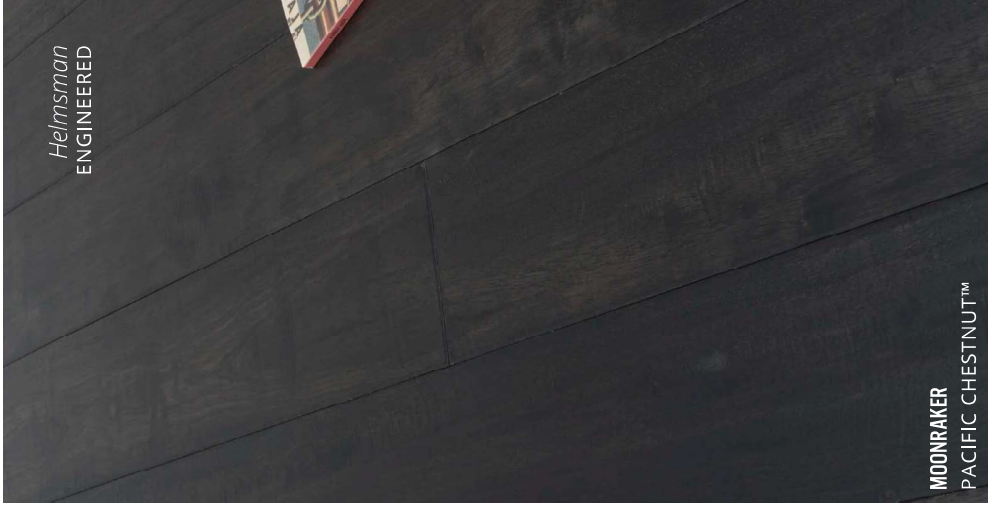
MERIDIJAN
PACIFIC CHESTNUT™



TOPMAST
PACIFIC CHESTNUT™



MOONRAKER
PACIFIC CHESTNUT™



Helmman
ENGINEERED

Featured Floor:

Meridian

When looking for a budget-friendly floor, many homeowners can be frustrated by the limited options.

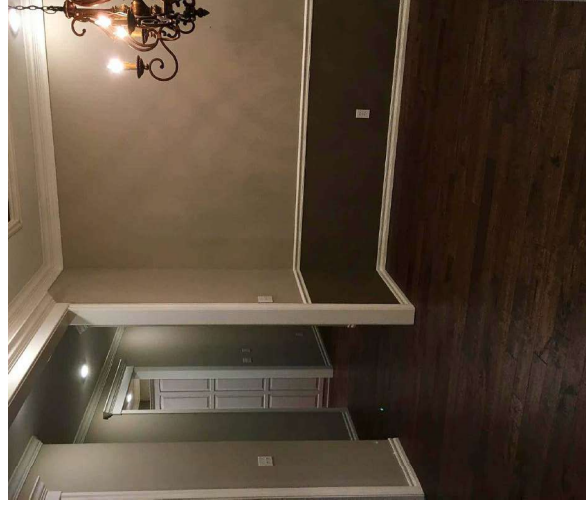
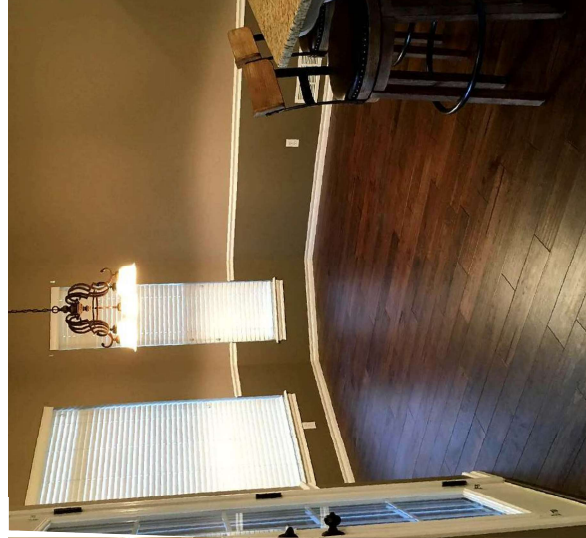
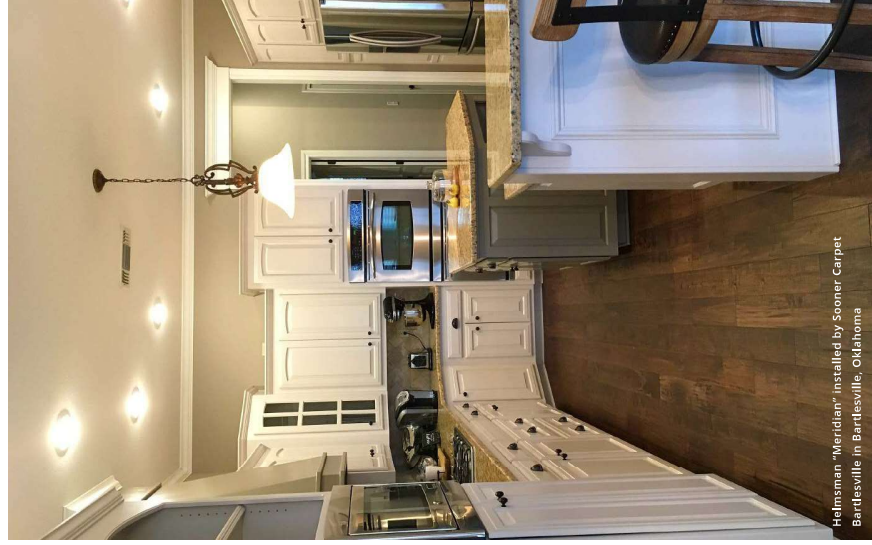
The machine-scraped hickory and birch can look similar, and it seems as if there's nothing else that's unique as well as affordable.

Our Helmsman Collection was designed for this customer in mind.

The exotic species, rich colors, and multiple textures have made this our go-to option for retailers, builders, and designers.

Pacific Chestnut™ (*Seringo*) has the appeal of an exotic floor, but comes with the stability of a domestic species. A thick sawn cut wear layer provides stability and durability for years to come.

The Helmsman Collection combines linear grain pattern, deep color, and weathered texture to give homeowners a beautiful, yet durable floor on a budget.



What makes this collection unique:

- Exotic grain pattern with multiple textures
- Versatile - goes well with many design styles
- Multiple textures combine to give this floor a unique weathered look

Helmsman "Meridian" installed by Sooner Carpet Bartlesville, Oklahoma